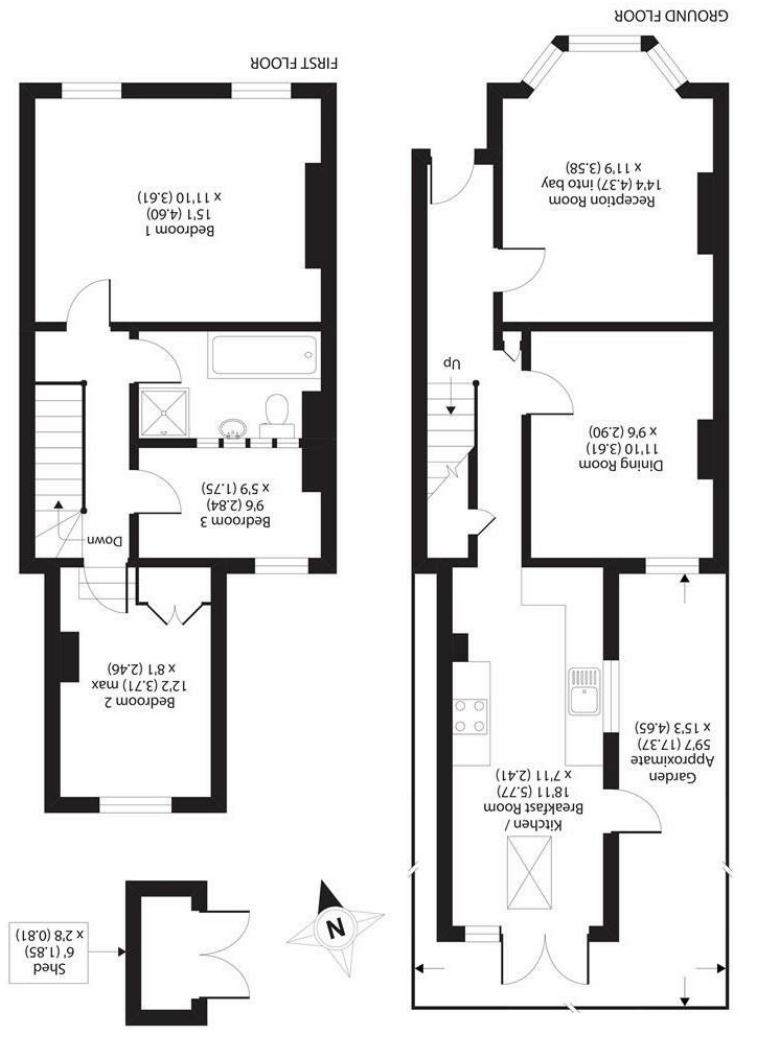
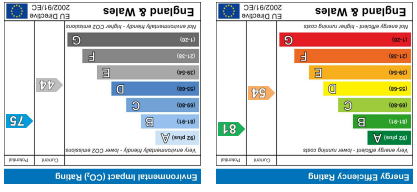


All appliances listed in these details are only 'as seen' and have not been tested by Gibson Lane, nor have we sought certification of warranty or service, unless otherwise stated. Measurements, areas and distances are approximate. Floor plans and photographs are for guidance purposes only and must not be relied upon for any purpose. These details are offered on the understanding that all negotiations are made through this company. Neither these particulars, nor verbal representations, form part of any offer or contract, and their accuracy cannot be guaranteed.



APPROX. GROSS INTERNAL FLOOR AREA 997 SQ FT 92.6 SQ METRES (EXCLUDES OUTBUILDING)

34 Richmond Road
 Kingston upon Thames
 Surrey
 KT2 5ED
 www.gibsonlane.co.uk
 Tel: 020 8546 5444





156 Kings Road
 Kingston Upon Thames KT2 5HU



Kings Road

Kingston Upon Thames KT2 5HU

Asking Price £775,000

A lovely three bedroom end of terraced home offering off road parking and a South facing garden.

Description

A lovely three bedroom end of terraced period home situated in the heart of North Kingston, offering plenty of character and charm and opportunity to extend (subject to the relevant planning permissions). There is an off street parking space to the front of the property, and the ground floor accommodation comprises two reception rooms and a country style kitchen opening onto dining area with double doors to the South facing rear garden. On the first floor there are three bedrooms and a bathroom. This lovely home is also offered to the market with no onward chain.

Situation

Kings Road is situated in this premier North Kingston location between Richmond Park, Canbury Gardens and the River Thames. The property is convenient for Kingston station giving direct access into Waterloo and the A3 which serves both London & M25. Kingston town centre with its array of shops and restaurants is a short distance away. The standard of schooling in the immediate area is excellent within both the private & state sectors, these include Latchmere, Fern Hill, the German School and Tiffin boys & girls, the area also has an extensive range of leisure facilities.

Tenure: Freehold

Local Authority: Kingston Upon Thames

